

CHESSBASE

15

FIRST
STEPS

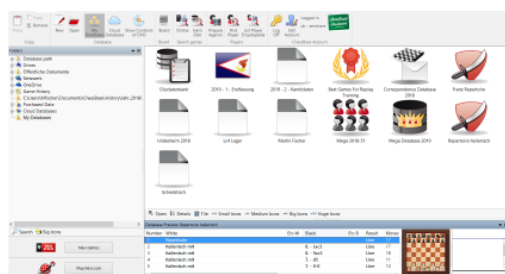


Part 1 - Basics

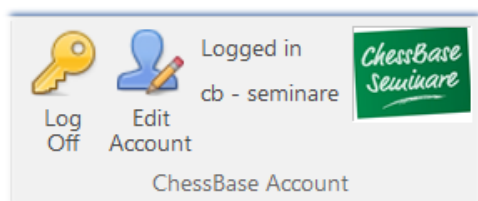
1.1 Technical basics, installation and activation

The installation and activation of ChessBase is easy and does not require any previous knowledge. You do need a Windows 7 or a more recent Windows operating system. Insert the DVD and run the exe-file your system (32-bit or 64-bit) requires. Follow the installation instructions. During the installation process you will be asked to enter the serial number. You do find the serial number in your DVD box or, when you bought ChessBase as download, in your online account. Before the first start of the program you are asked to activate your program. This again requires the serial number. You can use and activate your ChessBase program on three computers at the same time. After the activation you do have access to the online database and you receive free updates of ChessBase.

1.2 Der ChessBase starting screen



On the left is the ChessBase explorer, a small icon of your computer. The explorer allows you to browse your computer and to open files. Below that is the button that links to our game-update-service- [New Games](#) - and to playchess.com. On the right is the list of your databases, here shown by icons.



It is useful to log in with your ChessBase account. This allows you to access playchess.com, the update service, the database cloud, the engine cloud or your sparring partner, Fritz-Online, with one click.



The ChessBase serial number includes a three months Premium membership for the ChessBase account. A ChessBase Premium Account means **access to the entire ChessBase world** with its many modern WebApps **anytime and everywhere**.

1.3 Databases

ChessBase is a database program. You need databases to use it efficiently. You can create databases yourself or you can get them from other sources. The program allows databases of any size, no matter how big, and is thus an ideal tool to maintain your games and your training materials.

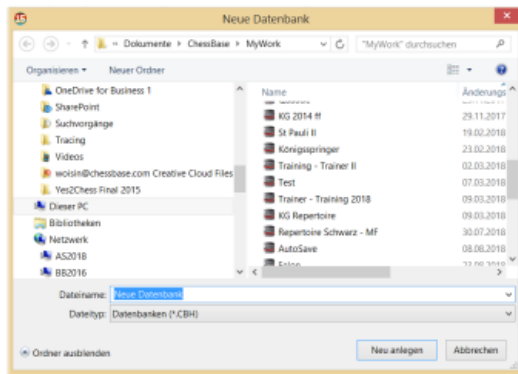
1.3.1 Online database

ChessBase gives you access to the online database. Only the combination ChessBase/Premium Account gives you access to about 72,000 annotated games in the online database.

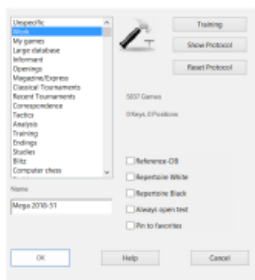
1.3.2 Reference database, Megabase 2019

To use the extensive search functions of the program a reference database is necessary. A reference database must be stored locally on your computer. Our recommendation: Megabase 2019 with about 7.4 million games, of which about 72,000 are annotated, plus weekly updates of at least 5,000 games. This keeps your reference database always up-to-date.

1.3.3 Create your own databases



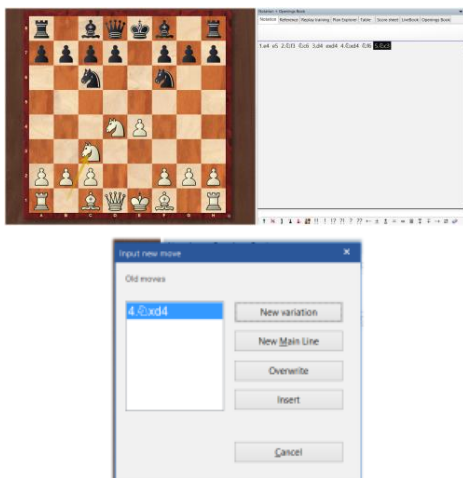
Creating databases is easy. Use the commands **File → New → Database** or the shortcut **Ctrl+X**. The picture on the left shows the menu that appears – you can choose where you want to save the database. Tip: you should create a database to use as desk. In this database you can save and analyze games which you can copy into other databases when you are finished with your work.



You can assign properties and icons/images to databases to access them faster on the desktop. Right-click with the mouse on the database symbol and from the menu shown on the left select the suitable icon for your database. In the example given, the hammer symbol was chosen for the database “desk”. The properties Reference- and Repertoire Database are important for the search functions.

1.4 Enter games and positions, enter variations and annotate

1.4.1 Enter game

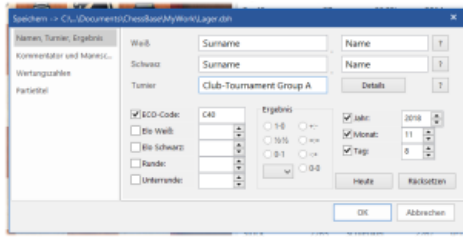


With a click on the board symbol or with the shortcut **Ctrl+N** you open the board, and now you can play through and enter a game with the mouse.

Tip: click on the target square. The program usually proposes the right move and you save a lot of time.

If you notice that a wrong move was entered, just go back to the position in question and enter the right move while keeping the Ctrl-key pressed. Now choose from the options.

Tip: When correcting “Insert” is important to keep the moves that follow (if they are legal after the correction).



To save a game you can either use the command File → Save → Save game or use the shortcut **Ctrl+S**. Enter the game data – surnames, names, etc. – into the mask shown in the picture on the left. To save the current version of the game again use **Ctrl+S** for „Save“. To create a copy of the game use the command File → Save Game As.

1.4.2 Enter a position



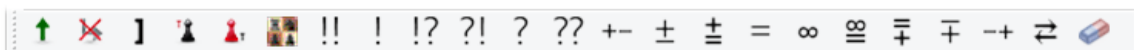
To enter a position just press **S** – while the board is open – and the menu shown on the left will appear. With „Drag & Drop“ you can position the pieces on the board. After positioning all pieces on the board, mark whether it is still possible to castle, whose move it is, and the move number of the next move. To conclude, press OK and the position will appear on the board.

1.4.3 Enter variations and annotate games



To enter analyses and annotations is easy. Just go to the „critical“ position with the mouse and play a different move than the one given in the text. ChessBase opens a variation. A double-click on a move opens a text editor to enter comments. ChessBase 14 highlights current variations by coloring them.

Please note the toolbar below the board:



These tools allow you to promote or delete variations, delete remaining moves or enter text before or after the move, enter or delete diagrams, evaluate the moves or the position or delete all commentary with the eraser symbol.

Part 2 – Train with ChessBase

The following are only a few of the many options to train with ChessBase. We focus on some of the new options in ChessBase

2.1 Loading a game

96	Carlsen,M	2832	0-1	36	D11	chess.com SpeedSim+2...	03.01.2018	4,5	Top...
96	Carlsen,M	2832	0-1	70	C45	chess.com SpeedSim+2...	03.01.2018	4,7	Top...
132	Nakamura,H	2789	1-0	62	E90	chess.com SpeedSim+2...	03.01.2018	4,8	Top...
155	Carlsen,M	2834	0-1	36	C47	Tata Steel-A 80th	14.01.2018	VCS 2	Top...
154	So,W	2792	1-0	75	D02	Tata Steel-A 80th	24.01.2018	VCS 8	Top...
134	Matkovic,M	2718	1-0	57	B48	Tata Steel-A 80th	27.01.2018	VCS 12	Top...
134	Giri,A	2625	1-0	34	C00	PRO League Stage rapid	18.01.2018	1	Top...
134	Shardor,A	2632	1-0	30	C40	PRO League Stage rapid	18.01.2018	1	Top...
90	Carlsen,M	2834	0-1	42	D02	PRO League Stage rapid	18.01.2018	1	Top...
68	Carlsen,M	2834	0-1	49	C00	PRO League Stage rapid	18.01.2018	1	Top...
134	Hudnall	2426	1-0	34	A00	PRO League Stage rapid	31.01.2018	3	Top...

To work with a game or a position you have to load it. Just open the database and open the relevant game with a double-click. Game and notation appear on the screen.

2.2 Instant Analysis – New in ChessBase 15



Immediately after loading a game a strong engine starts to analyse the game and provides a first evaluation after a few seconds. The course of the game is shown with a bar chart. By clicking on the bar chart you can go directly to the critical positions.

2.3 Assisted Analysis

“Assisted Analysis” is the digital form of “thinking aloud”. In this kind of training you speak your thoughts out loud while a coach gives hints to push you gently into the right direction. And this is what the “Assisted Analysis” function does.



In the position on the left you want to play the obvious move 13.Qd2 and to do so you click your queen with the mouse. The program shows and evaluates all possible moves of the queen. Green = Good and Red = Bad. The program asks you to reconsider your choice – 13.Qd2. Assisted Analysis stops you from blindly following moves and helps you to stay active while entering games or lines.

2.4 Replay Training – New in ChessBase 15

The Replay Training helps you to turn the replay of a game into an interactive and playful training unit. Use the added database with 100 master games as a start to the Replay Training.



You propose moves for one or both sides, and hints and points give feedback.

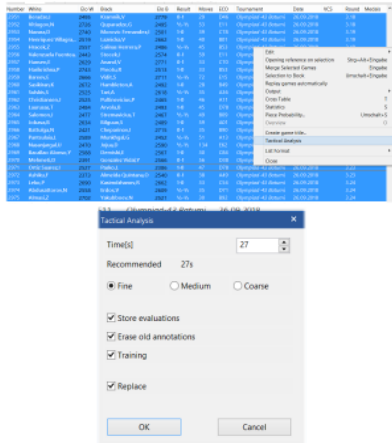
You decide if and in which form the chess engine helps you and gives hints and advice.

You decide whether you want to analyse certain positions more deeply (blindfold as calculation training or on the board) and you decide whether your efforts are included into the notation and whether they are saved (for checking them later).

The repertoire training is based on the same principle and allows you to check your knowledge of your opening repertoire.

2.5 Tactical analysis of games

The tactical analysis in ChessBase 15 allows you to let the program analyze games automatically. Let a strong chess program (Elo 3000+) check your games to create a basis for your own analyses, or analyze a whole number of grandmaster games with just a few clicks.



Select the games you want to analyze in the list of games in the database. After right-click with the mouse select the option “Tactical Analysis”.

You will be asked to enter a time. This is the value the program on average applies to each half-move. Additional options concern the way the program shows mistakes (Fine, Medium, Coarse) and how the results of the analyses should be saved and displayed.

2.6 Fritz – Online as sparring partner

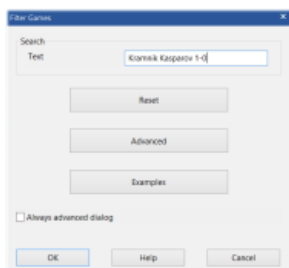


The evaluation of the position on the left is: „And White has a crushing attack“. But maybe you want to check this evaluation. However, you do not have a training partner who is ready to serve as punching bag for the sparring that might ensue – maybe for hours on end. In ChessBase 14 Fritz-Online serves as sparring partner. Click on Training and choose „Play Out Against Fritz“. If you are online, you will be connected to Fritz-Online. The position appears on the board (right). Before starting you can adjust the playing strength of the program.

Part 3 – Search functions

A significant part of the time available for training can be wasted by searching for suitable training material. Here, ChessBase helps you to save a lot of time with its new, improved and simplified search functions. Time which can be used for actual chess training.

3.1 One-line search – New in ChessBase 15



A lot of search requests, particularly the search for certain games, can be quickly carried out with the one-line search. In the example you search for the games Kramnik won against Kasparov by entering **Kramnik Kasparov 1-0** into the search mask – then press OK.

A number of examples which you can adapt as you like further illustrate and explain this search.

3.2 Simplifying the Advanced Search – New in ChessBase 15



In the Advanced Search you can enter examples when searching for “Material” which simplifies the search. The search for “Manoeuvres” now includes a menu that helps you to search for the most common tactical patterns. This helps you to quickly find instructive examples for certain types of positions or material to train tactics.

3.3 Preparing for an opponent

One of the most important options of the search functions is the preparation for an opponent. ChessBase offers a range of options to do that. One of the most efficient and fastest options is to use the reference database to create a dossier about your opponent.

Player	Opponent	Games	Points	Rating	Material	Manoeuvres	Attacks
Fischer	Martin	143	2085	m			1967
Fischer	Martin1	38		m			1927
Fischer	Martin4	1	2085	m			1967
Fischer	Marvin	26	1739	m			1994
Fischer	Max	29	1674	m			1948

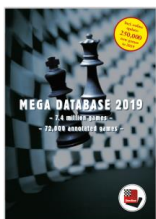
Suche: Fischer,Martin

Open the reference database (currently Megabase 2019) and go to “Players”. Enter name and surname of your possible opponent into the search bar at the bottom. The names of various players appear in the list. Select the name you want, right-click with the mouse and select “Dossier”. Now the program creates a tree and a report about the games of this player.

Züge	Partien	Punkte	Zuletzt	Mode
1.d2-d4	8	62.5%	2016	
1.e2-e4	7	64.3%	2016	
1.Sg1-f3	2	100.0%	2006	
1.c2-c4	2	75.0%	2015	
...	1	50.0%	2012	

Instead of “Dossier” there is also the option „Prepare against White“ or „Prepare against Black“. This option lists only the games – and merges them into a tree – your potential opponent played with White (or Black). In both cases you only need a few mouse-clicks to know the opening preferences of your potential opponent against your own opening repertoire.

3.3 – Reference database



For the search functions mentioned above the program uses a reference database which you have to define. Such a database should be big (contain a lot of games). We recommend the Mega Database. The Mega Database 2019 contains about 7.4 million games of which about 72,000 are annotated. The annotated games provide an inexhaustible source of material and inspiration, even more so because the database includes annotations by the world's best players.

Part 4 – The cloud databases

ChessBase allows you to create databases in the cloud and to work with them. This allows you to access these databases from everywhere – you can access the material not only with ChessBase, but also with your ChessBase Account and every web browser.

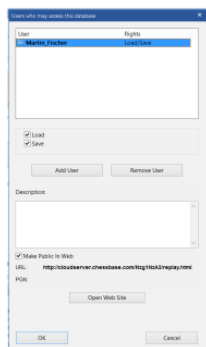
Go to the “Cloud” menu and you are logged onto your personal ChessBase-Cloud. Your Cloud-databases are shown on the screen.

4.1 Access with the web browser

In the web browser the App “MyGames” allows you access to your Cloud databases. You can also work with these databases in the web browser, that is, you can add, annotate and analyze games. An engine is available even if the device you use to access the database does not have one.



4.2 Access via web addresses



You can share cloud databases with other users. You can give them the right to load the database which gives them access to and the right to copy the content of the database though they cannot change it. But a user with writing authorization can revise the games, save this revision, and he can add and delete games.

Another option is to publish the cloud database on the web –the cloud database is given an individual URL that will not change. This allows to embed the database into a website and to access the database without a ChessBase Account.

Without a ChessBase account the content of the cloud database is still available via a powerful replayer. You can play through the games, analyze with an engine and save the games as a pgn-file. Training questions will also be shown.



ChessBase GmbH, Osterbekstrasse 90a, 22083 Hamburg, www.chessbase.com
November 2018